

# State of Wyoming Corner Record

(In compliance with the **CORNER PERPETUATION AND FILING ACT**, Wyoming Statutes, 1997 Section 33-29-140 et. seq., and the Rules and Regulations of the Board of Professional Engineers and Professional Land Surveyors)

Reverse side of this form may be used if more space is needed.

Record of original survey and citation of source of historical information (if corner is lost or obliterated). Description of corner monumentation evidence found and/or monument and accessories established to perpetuate the location of this corner. Sketch of relative location of monument, accessories, and reference points with course and distance to adjacent corner(s) (if determined in this survey). Method and rationale for reestablishment of lost or obliterated corner.

**G.L.O. RECORD:**

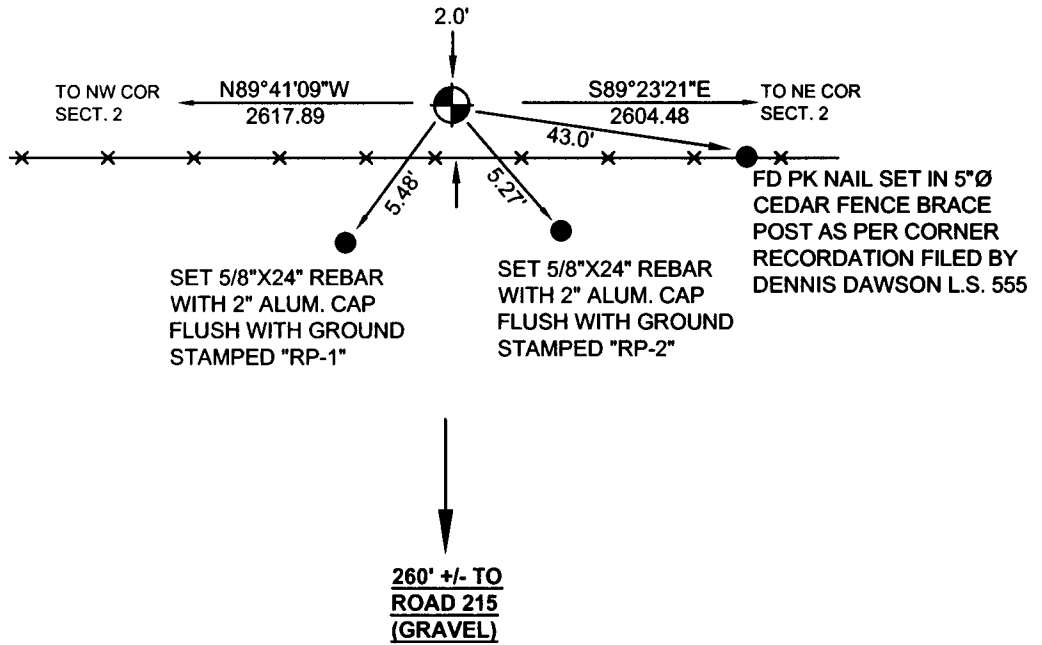
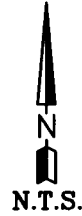
VARIATION 15°27'E  
 "FROM THE CORNER TO SECTIONS  
 34 & 35, T15N AND 2 & 3, T14N, RAN  
 S89°51'E ALONG THE SOUTH  
 BOUNDARY OF SECTION 35 40.00  
 CHAINS AND SET A GRANITE  
 BOULDER 16"X8"X5" FOR 1/4  
 SECTION CORNER".

**EXISTING CORNER RECORDATION:**  
 SEE BOOK 1388, PAGE 297  
 COUNTY RECORDS  
 VERIFIED FOUND G.L.O. STONE.

**AT THE CORNER:**

FOUND NOTHING.  
 SET A 2 1/2" ALUMINUM CAP ON A  
 5/8"X24" REBAR 0.2' ABOVE THE  
 SURFACE OF THE GROUND  
 STAMPED AS SHOWN. GRANITE  
 STONE WITH "1/4" CARVED ON THE  
 SIDE AS CALLED OUT BY CORNER  
 RECORDATION FILED BY  
 DENNIS DAWSON LS 555  
 BOOK 1388, PAGE 297  
 IS MISSING.

CORNER WAS RESET USING  
 CORNER RECORDATION SHEET  
 FILED BY DENNIS DAWSON LS 555  
 FILE DATE: NOVEMBER 18, 1994  
 BOOK 1388, PAGE 297.



Date of Field Work: 01/28/09

Office Reference: HENDRICKSON

**Cross Index Plat**

	1	2	3	4	5	6	7	8	9	10	11	12	13	14	15	16	17	18	19	20	21	22	23	24	25	
A																										
B	+	+	+	+	+	+	+	+	+	+	+	+	+	+	+	+	+	+	+	+	+	+	+	+	+	+
C	+	6	+	5	+	4	+	3	+	2	+	1	+													
D	+	+	+	+	+	+	+	+	+	+	+	+	+	+	+	+	+	+	+	+	+	+	+	+	+	+
E	+																									
F	+	+	+	+	+	+	+	+	+	+	+	+	+	+	+	+	+	+	+	+	+	+	+	+	+	+
G	+	7	+	8	+	9	+	10	+	11	+	12	+													
H	+	+	+	+	+	+	+	+	+	+	+	+	+	+	+	+	+	+	+	+	+	+	+	+	+	+
J	+																									
K	+	+	+	+	+	+	+	+	+	+	+	+	+	+	+	+	+	+	+	+	+	+	+	+	+	+
L	+	18	+	17	+	16	+	15	+	14	+	13	+													
M	+	+	+	+	+	+	+	+	+	+	+	+	+	+	+	+	+	+	+	+	+	+	+	+	+	+
N	+																									
O	+	+	+	+	+	+	+	+	+	+	+	+	+	+	+	+	+	+	+	+	+	+	+	+	+	+
P	+	19	+	20	+	21	+	22	+	23	+	24	+													
Q	+	+	+	+	+	+	+	+	+	+	+	+	+	+	+	+	+	+	+	+	+	+	+	+	+	+
R	+																									
S	+	+	+	+	+	+	+	+	+	+	+	+	+	+	+	+	+	+	+	+	+	+	+	+	+	+
T	+	30	+	29	+	28	+	27	+	26	+	25	+													
U	+	+	+	+	+	+	+	+	+	+	+	+	+	+	+	+	+	+	+	+	+	+	+	+	+	+
V	+																									
W	+	+	+	+	+	+	+	+	+	+	+	+	+	+	+	+	+	+	+	+	+	+	+	+	+	+
X	+	31	+	32	+	33	+	34	+	35	+	36	+													
Y	+	+	+	+	+	+	+	+	+	+	+	+	+	+	+	+	+	+	+	+	+	+	+	+	+	+
Z																										

Firm/Agency, Address

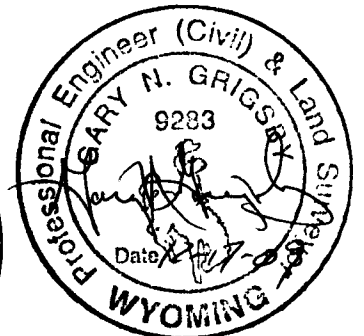
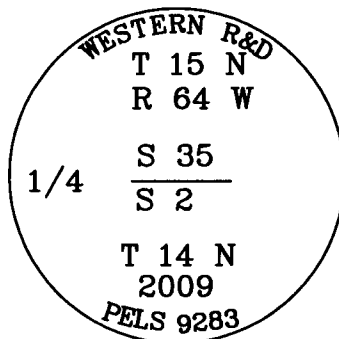
Western R&D, Ltd.  
 5809 Yellowstone Rd., Suite B  
 Cheyenne, Wyoming 82009

This corner record was prepared by me or under my direction and supervision.

SEAL & SIGNATURE

Telephone Number: (307) 632-5656

● Denotes Monument Set



Corner Name NORTH 1/4 CORNER Section 2, T 14 N, R 64 W, 6th P.M.

Cross-Index No.: A-18

County: LARAMIE Wyoming

SBRPEPLS/PLSW: March 1994; PLSW January 1998